

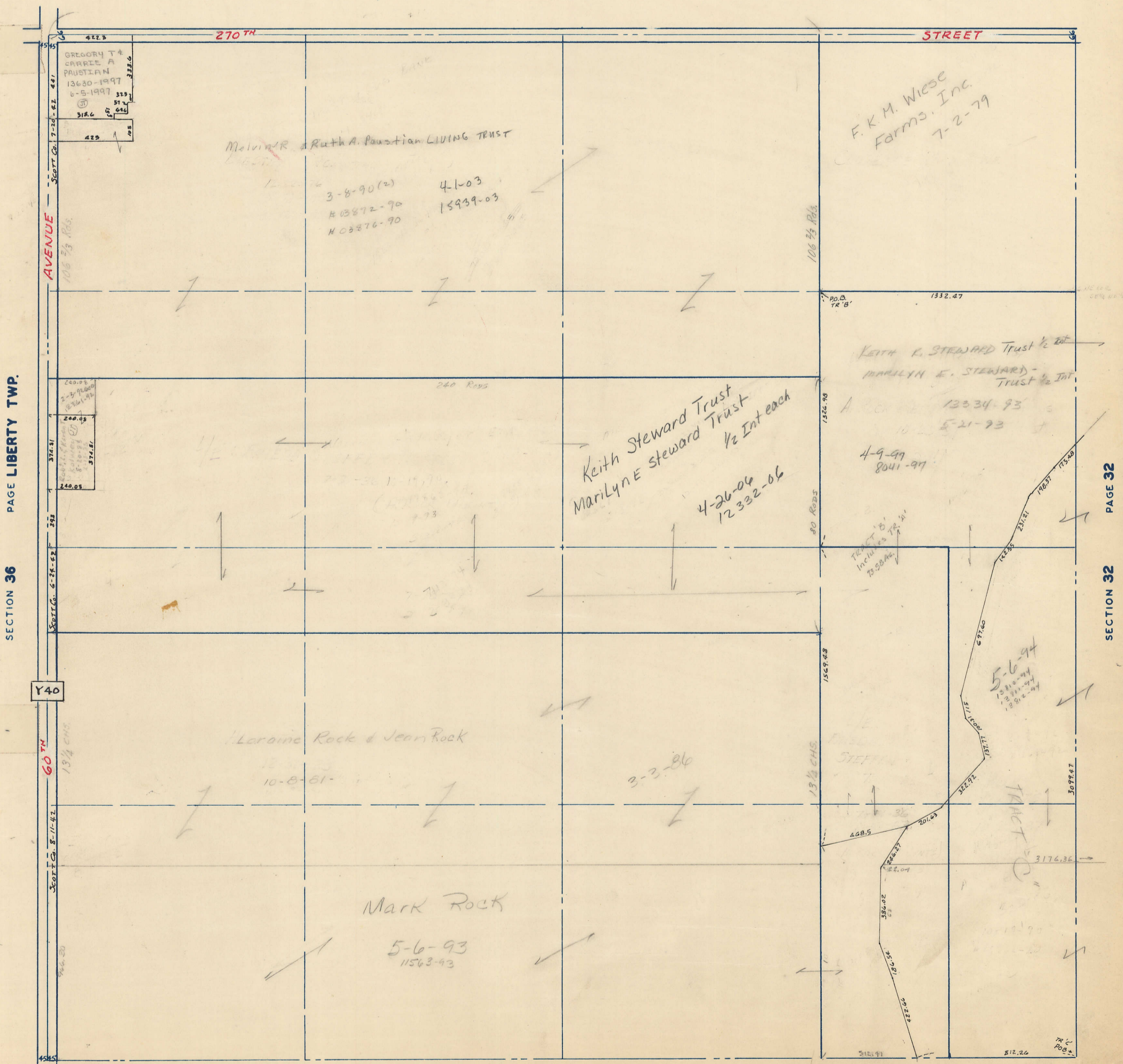
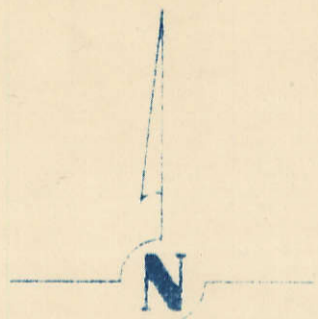
SECTION 31
TOWNSHIP 80 NORTH, RANGE 2 EAST,
5TH PRINCIPAL MERIDIAN
ALLENS GROVE TOWNSHIP
SCOTT COUNTY, IOWA

TRANSFER PAGE 26

SCALE : 1 INCH = 330 FEET

SECTION 30

PAGE 30



PAGE LIBERTY TWP.

SECTION 36

Y40

PAGE 32

SECTION 32

SECTION 6

PAGE HICKORY GROVE TWP.